

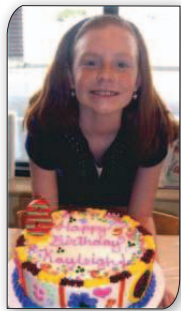
## AEF IN ACTION

*"My husband and I want to thank you for the gift of money. You have no idea how helpful the gift was. God bless our Auxiliary for the generous contribution."* —McInnis Family, Louisiana

*"I truly appreciate your help. I was to the point of not knowing where I was going to end up, and your help arrived two days before I was going to lose everything I had worked so hard for. After a long two years dealing with a personal sickness and losing my parents, I was ready to give up. You have given me the hope and faith again that I had lost."*

—Auxiliary Member, Pennsylvania

Dennis Conner, U.S. Army Reserve, was deployed at the time his 7-year-old daughter, Kayleigh, suffered a stroke. She later suffered another. Maggie Conner took six weeks' unpaid leave from work to be with Kayleigh at the hospital. With mounting hospital bills, the family was having trouble making mortgage payments when they applied for an AEF grant.



*"Our family wanted to say thank you very much for the grant money you gave us. This program helps families like ours more than you will ever know."* —Dennis, Maggie, Kendryck and Kayleigh Conner.

*Thanks to AEF, Kayleigh was able to celebrate her 8th birthday at home."*

## RESOURCES

### [www.ALAForVeterans.org](http://www.ALAForVeterans.org)

The ALA website has resource information for military servicemembers and their families, including organizations that provide community and social support, health and wellness services, career and education resources and legal and financial aid.

### [www.legion.org](http://www.legion.org) ★ (800) 504-4098

The American Legion's Family Support Network connects those in need with a Legion post that can provide assistance with grocery shopping, child care, mowing the grass, fixing the family car and other routine household jobs.

### [www.operationhomefront.net](http://www.operationhomefront.net)

Operation Homefront provides emergency financial assistance for servicemembers, their families and wounded warriors when they return home.

### [www.211.org](http://www.211.org)

Website links people with resources for basic needs, physical and mental health services, jobs, etc.

### [www.fema.gov](http://www.fema.gov)

FEMA website provides information for preparing, preventing and responding to disasters.

### [www.redcross.org](http://www.redcross.org)

The American Red Cross offers relief focused on meeting immediate, disaster-related needs such as food, shelter, health and mental health services.

### [www.fns.usda.gov/snap](http://www.fns.usda.gov/snap)

Food stamps and government assistance enable low-income families to purchase nutritious foods.

### [www.liheap.ncat.org](http://www.liheap.ncat.org)

Find links to each state's Low-Income Home Energy Assistance Program (LIHEAP).



American Legion Auxiliary  
National Headquarters

8945 N. Meridian St., Indianapolis, IN 46260

P: (317) 569-4500 | F: (317) 569-4502

[www.ALAForVeterans.org](http://www.ALAForVeterans.org)

[www.ALAFoundation.org](http://www.ALAFoundation.org)

© American Legion Auxiliary National Headquarters  
All rights reserved. 12/2011  
Produced in USA



# American Legion Auxiliary

## Members Helping Members in Crisis

# Emergency Fund



## In the Spirit of Service Not Self for Veterans, God and Country

## AUXILIARY EMERGENCY FUND

The Auxiliary Emergency Fund (AEF) is a national grant assistance program that provides temporary emergency help to eligible members of the American Legion Auxiliary who have suffered a significant financial setback as the result of an act of nature or other personal crisis.

The AEF was established in 1969 with a bequest from the estate of Auxiliary member Helen Colby Small of Burlington, Wisc. It continues today solely through generous donations from Auxiliary members.



## WHO IS ELIGIBLE?

Members of the American Legion Auxiliary whose dues are current and who have maintained membership for three consecutive years (the current year and immediate past two years) are eligible to apply in the wake of a financial crisis. Temporary assistance may be considered when:

- ★ A natural disaster or weather emergency leaves a member without shelter or food.
- ★ A financial crisis hits, leaving a member without resources for shelter, food or utilities, and no other source of aid is readily available.
- ★ In extreme circumstances, educational training is needed by a member lacking the necessary skills for employment.

Eligible members seeking emergency assistance apply via a process involving their unit, department and ALA National Headquarters.

## APPLICATION PROCESS

Members may request an application by contacting their unit or department headquarters and must submit their completed applications to an officer of the ALA unit to which the member belongs. The unit president and secretary will complete the unit portion and forward the application to the department secretary. After verifying the member's eligibility, the department secretary will submit the application to National Headquarters for consideration by the AEF Grant Committee. Applications are reviewed by the national AEF case manager. The national AEF Grant Committee, which consists of representatives from the headquarters of the American Legion Auxiliary and The American Legion, meets to review each application and awards AEF assistance according to case findings. The AEF maintains the confidentiality of all applicants. AEF applications, reviews, supporting documents and case files are not disclosed or released to anyone outside the AEF Grant Committee.

## ASSISTANCE INFORMATION

Emergency assistance grants may be awarded by the AEF Grant Committee on a case-by-case basis up to a maximum of \$2,400. Grant funds may be used only for emergency shelter, food or utilities. AEF funds may not be used for medical expenses or debt such as that on credit cards.

To ensure the integrity of the program, the national AEF Grant Committee directs payments to a provider such as a mortgage or utility company.

Educational grant payments are directed to the educational institution.



# YOU CAN HELP

**BE KNOWLEDGEABLE** – Familiarize yourself and your unit members with the Auxiliary Emergency Fund. Knowing about this program will make the process easier should you need to help a member apply.

**BE AWARE** – Learn the application process and fund restrictions, and help members in need contact other nonprofit agencies that might be able to assist them.

**BE GENEROUS** – Contributions sustain the Auxiliary

Emergency Fund. Help can only be provided to members facing a crisis because of your generosity.

Please mail a check or money order, payable to American Legion Auxiliary National Treasurer, with "AEF" in the memo line. Mail to:

American Legion Auxiliary  
National Headquarters  
ATTN: Donations, 8945 N. Meridian St.  
Indianapolis, IN 46260 or give online  
at [www.ALAforVeterans.org](http://www.ALAforVeterans.org).

